

SALMON FALLS HEADWATER LAKES

Watershed Management Plan



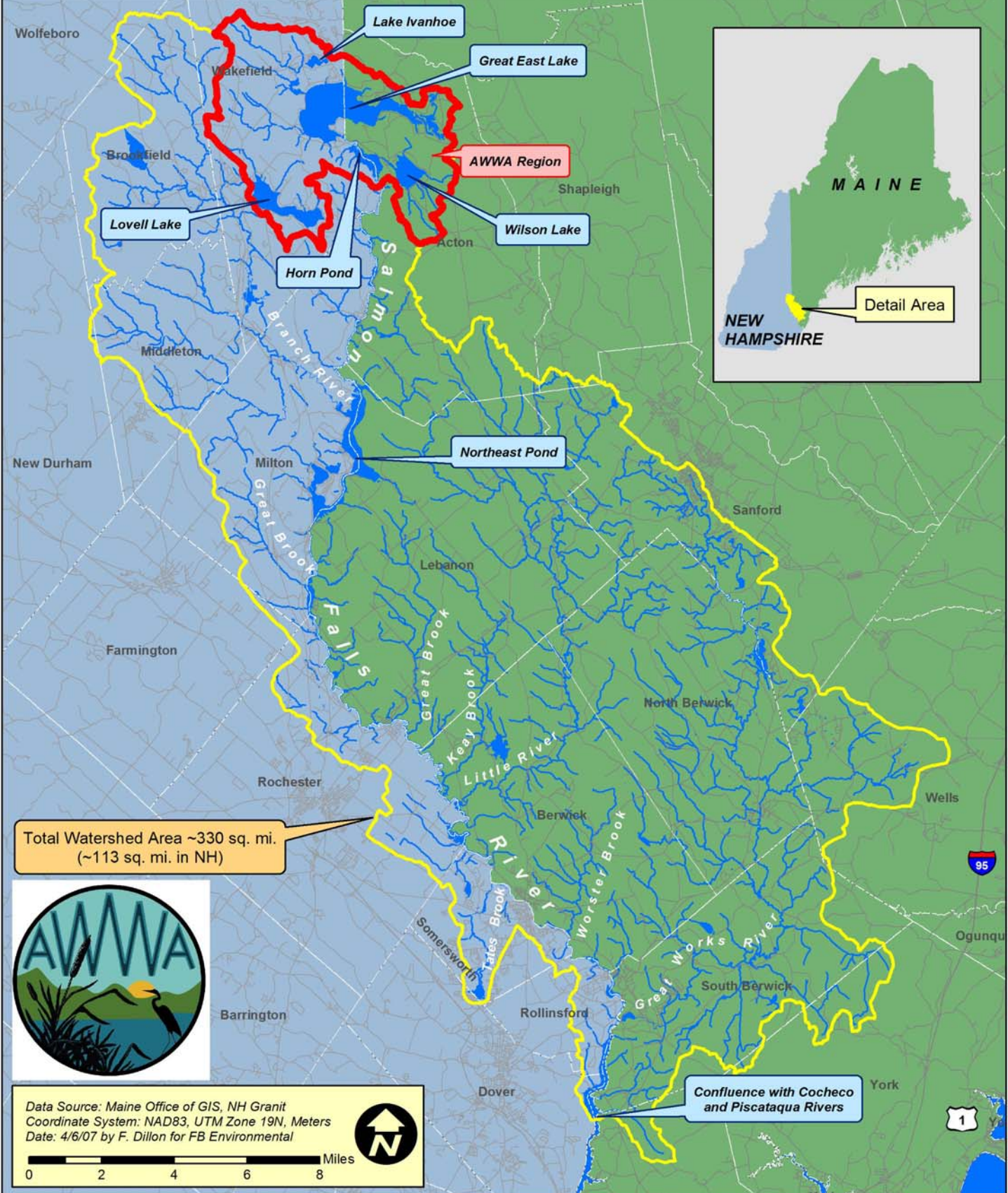
Acton Wakefield Watersheds Alliance
PO Box 235, 254 Main Street
Union, NH 03887



FB Environmental Associates, Inc.
97A Exchange Street, Suite 305
Portland, ME 04101

~ January 2010 ~


AWWA Region & the Salmon Falls River Watershed



Total Watershed Area ~330 sq. mi.
(~113 sq. mi. in NH)



Data Source: Maine Office of GIS, NH Granit
Coordinate System: NAD83, UTM Zone 19N, Meters
Date: 4/6/07 by F. Dillon for FB Environmental



0 2 4 6 8 Miles

SALMON FALLS HEADWATER LAKES

Watershed Management Plan

Prepared by:

**FB Environmental Associates, Inc.
97A Exchange Street, Suite 305
Portland, ME 04101**

Contact:

**Acton Wakefield Watersheds Alliance
Linda Schier, Executive Director
PO Box 235, 254 Main Street
Union, NH 03887
info@awwatersheds.org
603-473-2500**

January 2010

*Cover photo: Aerial view of the Salmon Falls headwater lakes, with Great East Lake (top center),
Horn Pond and Wilson Lake (courtesy of John Wilson).*

Acknowledgements

Acton Wakefield Watersheds Alliance Board of Directors

<i>Linda Schier, Executive Director</i>	<i>Donald Chapman, Director</i>
<i>Carol Lafond, President</i>	<i>Chuck Hodsdon, Director</i>
<i>Dick DesRoches, Vice President</i>	<i>Marcia Hodsdon, Director</i>
<i>Pat Theisen, Secretary</i>	<i>Penny Voyles, Director</i>
<i>Jeanne Achille, Treasurer</i>	<i>Glenn Wildes, Director</i>

WMP Steering Committee

<i>Jeanne Achille</i>	<i>Ken Jeffery</i>	<i>Ken Paul</i>
<i>Tom Cashin</i>	<i>Dave Mankus</i>	<i>Bruce Rich</i>
<i>Rod Cools</i>	<i>Paul Mathias</i>	<i>Nancy Ruma</i>
<i>Dick DesRoches</i>	<i>Kathy Menici</i>	<i>Linda Schier</i>
<i>Joe Fleck</i>	<i>Denny Miller</i>	<i>Cheri Schlenker</i>
<i>Nathan Fogg</i>	<i>Don Mills</i>	<i>Peg Stevenson</i>
<i>Robin Frost</i>	<i>Catherine Mills</i>	<i>Pat Theisen</i>
<i>Chuck Hodsdon</i>	<i>Steve Panish</i>	<i>Glenn Wildes</i>

In addition to the Steering Committee, the following people attended the first Community Forum:

<i>Arthur Capello</i>	<i>Dick Neal</i>
<i>John Ciardi</i>	<i>Denise Roy Palmer</i>
<i>Jennifer Craig</i>	<i>Rosemary Stewart</i>
<i>Alan Heacock</i>	<i>Betty Wildes</i>
<i>Nancy Lambert</i>	

Water Quality Threshold Committee

<i>Andy Chapman, NHDES</i>	<i>Jeff Dennis, Maine DEP</i>	<i>Paul Currier, NHDES</i>
<i>Bob Craycraft, UNH</i>	<i>Jeff Schloss, UNH</i>	<i>Steve Landry, NHDES</i>
<i>Bob Estabrook, NHDES</i>	<i>Ken Edwardson, NHDES</i>	<i>Roy Bouchard, Maine DEP</i>
<i>Eric Williams, NHDES</i>	<i>Linda Schier, AWWA</i>	<i>Sally Soule, NHDES</i>

FB Environmental Technical Staff

<i>Forrest Bell</i>	<i>Jess Harold</i>
<i>Fred Dillon</i>	<i>Kailee Mullen</i>
<i>Jennifer Jespersen</i>	<i>Tricia Rouleau</i>

Acknowledgements cont.

Additional Technical Support

<i>Linda Bacon, Maine DEP</i>	<i>Great East Lake Improvement Association</i>
<i>Dan Camara, SRPC</i>	<i>Horn Pond Association</i>
<i>Jamie Oman-Saltmarsh, SMRPC</i>	<i>Lovell Lake Association</i>
<i>Sara Steiner, NHDES (VLAP)</i>	<i>Round Pond Association</i>
	<i>Wilson Lake Association</i>

Watershed Survey Technical Leaders

<i>Jeanne Achille, AWWA</i>	<i>Rebecca Martin, Maine DEP AmeriCorps</i>
<i>Joe Anderson, YCSWCD</i>	<i>Deb Mayo, landowner</i>
<i>Wendy Garland, Maine DEP</i>	<i>Linda Schier, AWWA</i>
<i>Chuck Hodsdon, AWWA</i>	<i>Adam Shoukimas, AWWA</i>
<i>Carol Lafond, AWWA</i>	<i>Sally Soule, NHDES</i>
<i>Lisa Loosigian, NHDES</i>	<i>Ann Speers, Maine DEP AmeriCorps</i>
	<i>Megan Wooster, Androscoggin Valley SWCD</i>

Watershed Survey Volunteers

<i>Steve & Robin Baker</i>	<i>Gary & Mary Field</i>	<i>Yola Mourginis</i>	<i>Stephanie Theisen</i>
<i>Don & Emily Bell</i>	<i>Debra Fortier</i>	<i>Arnie Murray</i>	<i>Sadie Varney</i>
<i>Michael Bernier</i>	<i>Janet & Gary Gould</i>	<i>Bob & Gail Myrick</i>	<i>Julie Venell</i>
<i>Gil & Barbara Binette</i>	<i>John Hildebrandt</i>	<i>Tony Pecci</i>	<i>Penny & Jim Voyles</i>
<i>Verna Boudreau</i>	<i>John & Anusia Hirsch</i>	<i>Ella Richardson</i>	<i>Charlie Wills</i>
<i>Barbara Caron</i>	<i>Dee Kasprzak</i>	<i>Linda Rosenthal</i>	2008-2009
<i>Carol Clark</i>	<i>Jackie Keating</i>	<i>Rachel Rosenthal</i>	Water Monitors
<i>Libby Cochran</i>	<i>David Lafond</i>	<i>Craig & Andrea Rowley</i>	<i>Chuck Hodsdon</i>
<i>Kent Coit</i>	<i>Ashley Lizotte</i>	<i>Glenn Rowley</i>	<i>Marcia Hodsdon</i>
<i>Amy Craig</i>	<i>Shirley MacFarlane</i>	<i>John Schier</i>	<i>Carol Lafond</i>
<i>Geoff DelSesto</i>	<i>Paul Maguire</i>	<i>Jim Seaboyon</i>	<i>David Lafond</i>
<i>David Doherty</i>	<i>Hayley Mandeville</i>	<i>Susan Shannon</i>	<i>Barbara Binette</i>
<i>Mike Dubois</i>	<i>David Mankus</i>	<i>Tim Sherrill</i>	<i>Gil Binette</i>
<i>Bob & Sandy Eldredge</i>	<i>Bill & Nancy Marshall</i>	<i>Judy & Peter Sjostrom</i>	<i>Dick DesRoches</i>
<i>Joanne Emerson</i>	<i>Irene & Terry Martel</i>	<i>Bess & Doug Smith</i>	<i>Judi DesRoches</i>
<i>Gary Estes</i>	<i>Rebecca Martin</i>	<i>Dorothy Smith</i>	<i>Dick Peckham</i>
<i>Jeff Everett</i>	<i>Chris McKay</i>	<i>Wayne Sylvester</i>	<i>Stephanie Thornton</i>
			<i>Glenn Thornton</i>

Funding for this plan was provided in part by a Watershed Assistance Grant from the NH Department of Environmental Services with Clean Water Act Section 319 funds from the U.S. Environmental Protection Agency. Additional support was provided by the towns of Wakefield, NH and Acton, ME, the Alden N Young Trust, the NH Charitable Foundation, the Adelard & Valeda Roy Foundation, and the Jane B Cook 1983 Charitable Trust.

Table of Contents

Acknowledgments	ii
Executive Summary	ix-xiv
<u>Chapter 1. Introduction</u>	1
1.1 Purpose and Background.....	1
1.2 Plan Development and Community Participation Process.....	2
1.3 Current Efforts of the Acton Wakefield Watersheds Alliance.....	2
1.3.1 Watershed Surveys.....	3
1.3.2 Youth Conservation Corps.....	4
1.3.3 Public Outreach	4
1.4 Incorporating EPA’s 9 Elements.....	4
<u>Chapter 2. SF headwater lakes Watersheds Characterization</u>	7
2.1 Climate	7
2.2 Population, Land Use and Growth Trends	7
2.2.1 Population and Growth Trends	7
2.2.2 Land Uses	8
2.2.3 Protected Lands.....	10
2.3 Physical Features.....	11
2.3.1 Topography	11
2.3.2 Soils and Geology	12
2.3.3 Drainage Areas.....	14
2.3.4 General Lake Characteristics and Morphology.....	15
2.4 Invasive Plants	15
2.5 Estimating of Watershed Pollutant Sources.....	16

2.5.1 STEPL Methodology	16
2.5.2 STEPL Results	20
<u>Chapter 3. Water Quality Assessment</u>	25
3.1 Applicable Water Quality Standards and Criteria.....	25
3.1.1 Designated Uses	25
3.1.2 Water Quality Classification	26
3.1.3 Antidegradation.....	26
3.1.4 Water Quality Standards and Criteria	27
3.1.5 Lake Nutrient Criteria	28
3.1.6 Relating and Interpreting Water Quality Data and Lake Nutrient Criteria.....	30
3.2 Assessment Methodology	31
3.2.1 Water Quality Data Acquisition.....	31
3.2.2 Water Chemistry Assessment	32
3.2.3 Assimilative Capacity Analysis & In-Lake Phosphorus Modeling	38
3.2.4 Establishing Water Quality Goals.....	40
3.3 Master Plan & Local Ordinance Review	42
3.4 Future Land Use Projections: Build Out Analysis.....	44
3.5 Shoreline Survey Assessment	47
<u>Chapter 4. Management Plan Rationale and Approach</u>	53
4.1 Goals for Long-Term Protection.....	53
4.2 Non-structural Restoration Rationale.....	53
4.3 Structural Restoration Rationale	54
4.4 Addressing Current and Future Pollution Sources.....	54
4.5 Adaptive Management Approach	55

<u>Chapter 5. Plan Implementation</u>	58
5.1 Structural NPS Reduction Opportunities	58
5.2 Non-Structural and Land Protection Opportunities	59
5.2.1 Land Use Planning Recommendations	59
5.2.2 Good Housekeeping, Training and Education	60
5.3 Other Opportunities.....	61
5.3.1 Municipal Ordinance Revisions	61
5.3.2 Watershed Education & Outreach	62
5.4 Watershed Action Strategy including Schedule and Estimated Costs	63
<u>Chapter 6. Methods for Measuring Success</u>	70
6.1 Measurable Milestones.....	70
6.2 Criteria for Measuring Load Reductions.....	71
6.3 Long-Term Monitoring and Assessment Program.....	72
<u>Chapter 7. Sustaining the Plan</u>	76
7.1 Inter-Local and Inter-State Cooperation	76
7.2 Sustainable Funding Mechanisms.....	77
REFERENCES	76
APPENDICES	81
A) Site Specific Project Plan	82
B) Watershed Maps.....	95
C) Watershed Survey Summary Sheets	107
D) Municipal Ordinance Review	118
E) Buildout Analysis.....	153
F) Lake Summary Factsheets.....	183

List of Tables

Table 1.1: Watershed survey results: sediment and phosphorus loads.	3
Table 2.1: 2000 population demographics for Acton and Wakefield.	8
Table 2.2: Buildable land in the Acton-Wakefield region	8
Table 2.3: Percent developed and buildable area in the SF headwater lakes watersheds.	14
Table 2.4: SF headwater lakes characteristics and morphology.	14
Table 2.5: AVGWLF land use categories combined to fit STEPL land use categories.	17
Table 2.6: Numbers of septic systems in the SFH lakes region by subwatershed.	20
Table 2.7: SF headwater lakes subwatershed annual phosphorus loads.	20
Table 2.8: SF headwater lakes subwatershed per acre phosphorus loads.	20
Table 2.9: SF headwater lakes subwatershed annual phosphorus loads, by source.	21
Table 3.1: Aquatic life nutrient criteria by trophic class in NH.	28
Table 3.2: Decision matrix for aquatic life use assessment determinations in NH.	29
Table 3.3: Numerical guidelines for evaluation of trophic status in Maine.	29
Table 3.4: Lake nutrient criteria applied to SF headwater lakes.	30
Table 3.5: Description of available sampling data for SF headwater lakes.	32
Table 3.6: Physical characteristics of SF headwater lakes.	33
Table 3.7: Results of the assimilative capacity analysis for lakes.	38
Table 3.8: Results of the in-lake total phosphorus model.	39
Table 3.9: Acceptable phosphorus increase according to state guidelines.	40
Table 3.10: Center for Watershed Protection community scoring guidelines.	43
Table 3.11: Summary of codes and ordinance worksheet scores for Acton and Wakefield.	44
Table 4.1: Estimated future P loads for SF Headwater lake subwatersheds.	55
Table 5.1: Summary of the CWP codes and regulations worksheet score for Acton and Wakefield.	61
Table 7.1: Primary and secondary potential funding sources.	71

List of Figures

Figure 2.1: Land uses in the SF headwater lakes watersheds.	9
Figure 2.2: Impervious cover in the SF headwater lakes region.....	9
Figure 2.3: Conservation lands in the SF headwater lakes region.	11
Figure 2.4: Soil erosion potential in the SF headwater region.....	12
Figure 2.5: The AWWA watersheds (Salmon Falls Headwaters).	13
Figure 2.6: Map of aggregated land uses for STEPL pollutant load model.	18
Figure 2.7: Map of residential septic system data used for STEPL pollutant load model.....	19
Figure 2.8: SF headwater lakes subwatershed annual phosphorus loads, by percentage.	21
Figure 2.9: Great East Lake subwatershed phosphorus loads by source.	22
Figure 2.10: Horn Pond subwatershed phosphorus loads by source.....	22
Figure 2.11: Lake Ivanhoe subwatershed phosphorus loads by source.	23
Figure 2.12: Lovell Lake subwatershed phosphorus loads by source.....	23
Figure 2.13: Wilson Lake subwatershed phosphorus loads by source.....	24
Figure 3.1: Mean water clarity for SF headwater lakes.	34
Figure 3.2: Mean water color of SF headwater lakes.....	34
Figure 3.3: Mean chlorophyll-a for SF headwater lakes.....	35
Figure 3.4: Contrasting dissolved oxygen profiles for two of the SF headwater lakes.	36
Figure 3.5: Median total phosphorus for SF headwater lakes.....	37
Figure 3.6: Final water quality recommendations for SF headwater lakes.....	41
Figure 3.7: Existing and projected buildout units in Acton and Wakefield.....	45
Figure 3.8: Great East Lake shoreline survey results.....	48
Figure 3.9: Lovell Lake shoreline survey results.....	49
Figure 3.10: Horn Pond shoreline survey results.....	50
Figure 3.11: Wilson Lake shoreline survey results.....	51
Figure 3.12: Lake Ivanhoe shoreline survey results.....	52